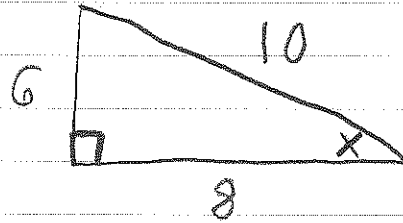
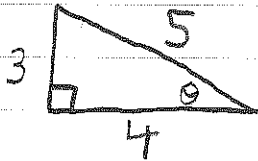


Sine, Cosine and Tangent

Sine (sin) is the opposite side divided by hypotenuse
Cosine (cos) is the adjacent side divided by hypotenuse
Tangent (tan) is the opposite divided by the adjacent



$$\text{Sine of } \theta \text{ is } \frac{3}{5} = 0.6$$

$$\text{Sine of } x \text{ is } \frac{6}{10} = 0.6$$

$$\text{Cosine of } \theta \text{ is } \frac{4}{5} = 0.8$$

$$\text{Cosine of } x \text{ is } \frac{8}{10} = 0.8$$

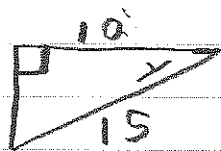
$$\text{Tangent of } \theta \text{ is } \frac{3}{4} = 0.75$$

$$\text{Tangent of } x \text{ is } \frac{6}{8} = 0.75$$

θ and x must be the same angle

To find what angle use calculator
press $\boxed{2nd}$ $\boxed{\sin}$ and then type 0.6 and $\boxed{=}$

$$\theta = 36.87^\circ$$



Find what angle y is

$$\cos y = \frac{10}{15}$$

$$2nd \cos (10 \div 15)$$

$$y \text{ is } 48.19^\circ$$