

Similar triangles

Normally to tell if two shapes are similar you need to check that all corresponding angles are congruent and corresponding sides are proportional.

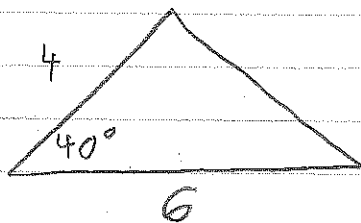
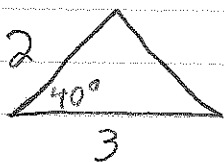
Two triangles are similar if

AA 2 corresponding angles are congruent
OA

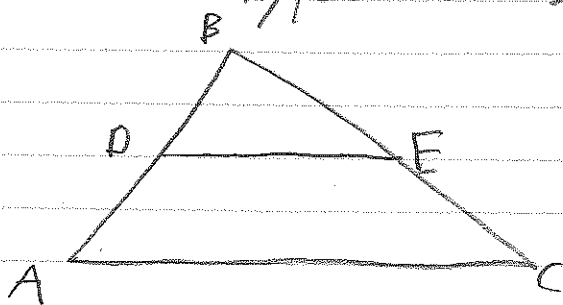
SSS corresponding sides are proportional
OA

SAS 2 corresponding sides are proportional
angles between them are congruent

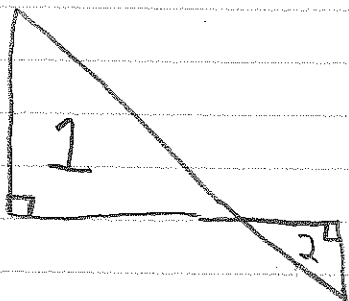
ex



Common types of similar triangles



$$\triangle ABC \sim \triangle DBE$$



$$\triangle 1 \sim \triangle 2$$