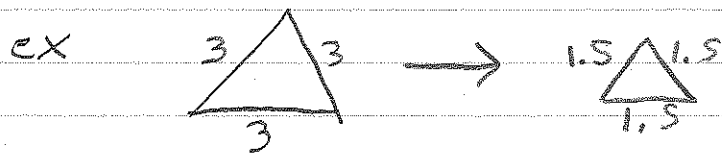


Scale factor

The number you multiply all sides by to get an enlargement or reduction is called the "scale factor"



Scale factor is 2

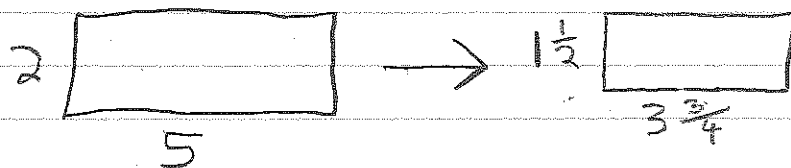


Scale factor is 0.5

A scale factor > 1 means enlargement
A scale factor < 1 means reduction

$$\text{Scale factor} = \frac{\text{new}}{\text{old}}$$

ex) determine the scale factor



$$\frac{1.5}{2} = 0.75$$