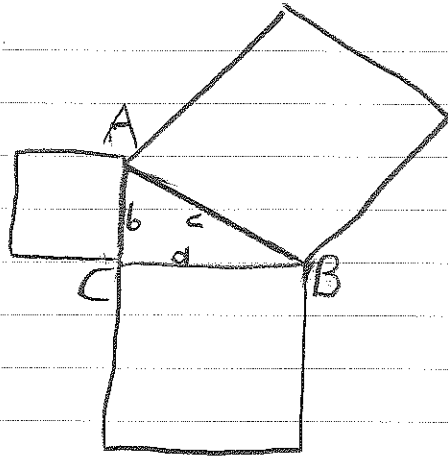


# Pythagorean Theorem

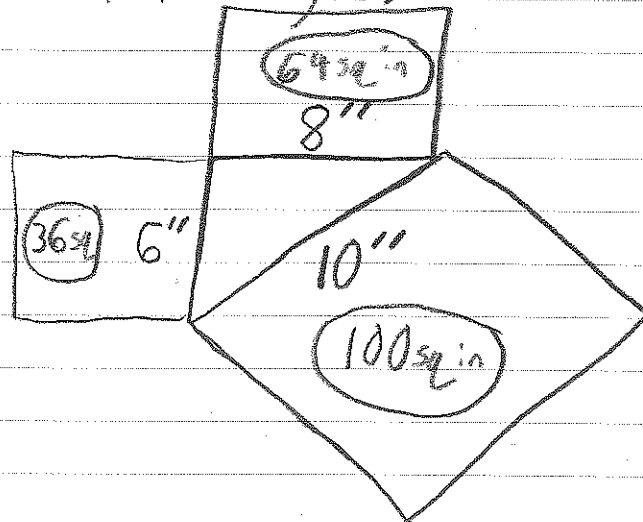


Area of the two smaller squares added is equal to area of the large square

$$d^2 + b^2 = c^2$$

This is only true if the triangle is "right" (has a  $90^\circ$  angle)

Example:



$$\begin{array}{r} 36 \\ +64 \\ \hline 100 \end{array}$$

Yes it is right

Ex: Triangle with sides 10ft, 15ft and 20ft

$$10^2 = 100 \quad 15^2 = 225 \quad \text{No} \quad 20^2 = 400$$