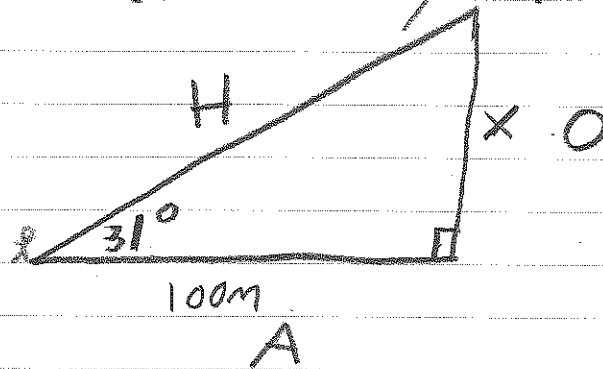


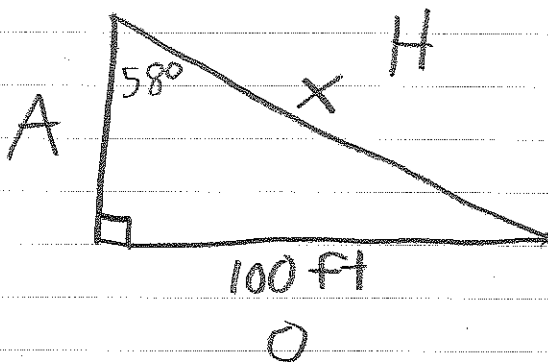
# Finding side length

We can use trig to find side lengths



$$\frac{\tan 31}{1} = \frac{x}{100}$$

$$\tan 31 \times 100 \div 1 = 60.09\text{m}$$



$$\frac{\sin 58}{1} = \frac{100}{x}$$

$$100 \times 1 \div \sin 58 = 117.92\text{ft}$$