

Finding Side Length using Trigonometry Worksheet

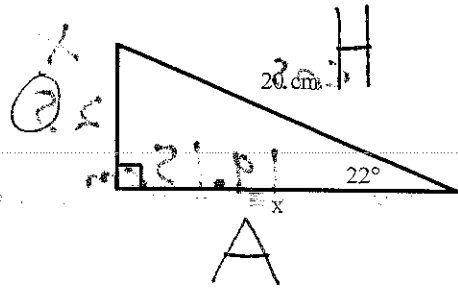
Name: \_\_\_\_\_

1.

a) Label the sides as O, A and H for the angle shown

b)  $\frac{\cos}{\sin, \cos \text{ or } \tan} 22^\circ = \frac{x}{20}$

c)  $x = 18.54 \text{ cm}$

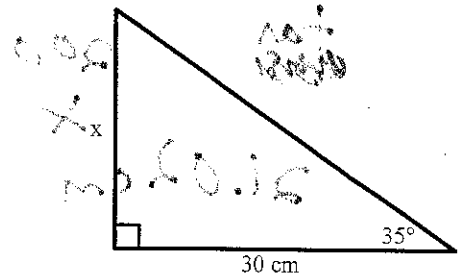


2.

a) Label the sides as O, A and H for the angle shown

b)  $\frac{\tan}{\sin, \cos \text{ or } \tan} 35^\circ = \frac{x}{30}$

c)  $x = 21.01 \text{ cm}$

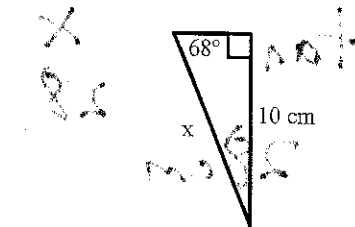


3.

a) Label the sides as O, A and H for the angle shown

b)  $\frac{\sin}{\sin, \cos \text{ or } \tan} 68^\circ = \frac{10}{x}$

c)  $x = 10.79 \text{ cm}$

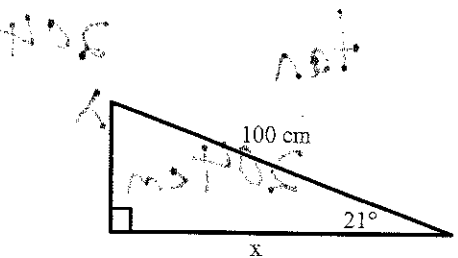


4.

a) Label the sides as O, A and H for the angle shown

b)  $\frac{\cos}{\sin, \cos \text{ or } \tan} 21^\circ = \frac{x}{100}$

c)  $x = 93.36 \text{ cm}$

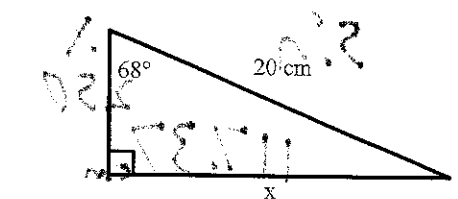


5.

a) Label the sides as O, A and H for the angle shown

b)  $\frac{\sin}{\sin, \cos \text{ or } \tan} 68^\circ = \frac{x}{20}$

c)  $x = 18.54$

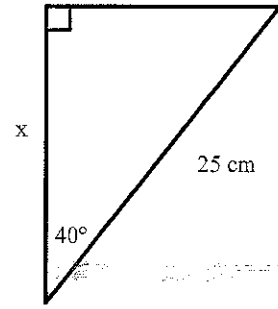


6.

a) Label the sides as O, A and H for the angle shown

b)  $\frac{\cos}{\sin, \cos \text{ or } \tan} 40^\circ = \frac{x}{25}$

c)  $x = 19.15 \text{ cm}$

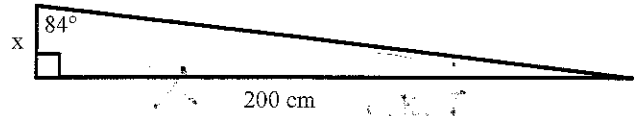


7.

a) Label the sides as O, A and H for the angle shown

b)  $\frac{\tan}{\sin, \cos \text{ or } \tan} 84^\circ = \frac{200}{x}$

c)  $x = 21.02 \text{ cm}$

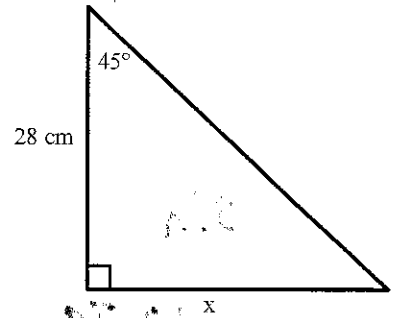


8.

a) Label the sides as O, A and H for the angle shown

b)  $\frac{\tan}{\sin, \cos \text{ or } \tan} 45^\circ = \frac{x}{28}$

c)  $x = 28 \text{ cm}$

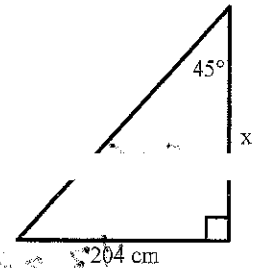


9.

a) Label the sides as O, A and H for the angle shown

b)  $\frac{\tan}{\sin, \cos \text{ or } \tan} 45^\circ = \frac{204}{x}$

c)  $x = 204 \text{ cm}$



10.

a) Label the sides as O, A and H for the angle shown

b)  $\frac{\sin}{\sin, \cos \text{ or } \tan} 28^\circ = \frac{x}{250}$

c)  $x = 117.37 \text{ cm}$

