

Name: _____

1.

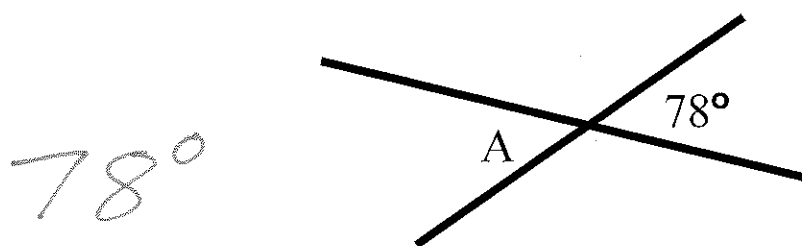
a) What is the measure of an angle which is complementary to a 50° angle?

40°

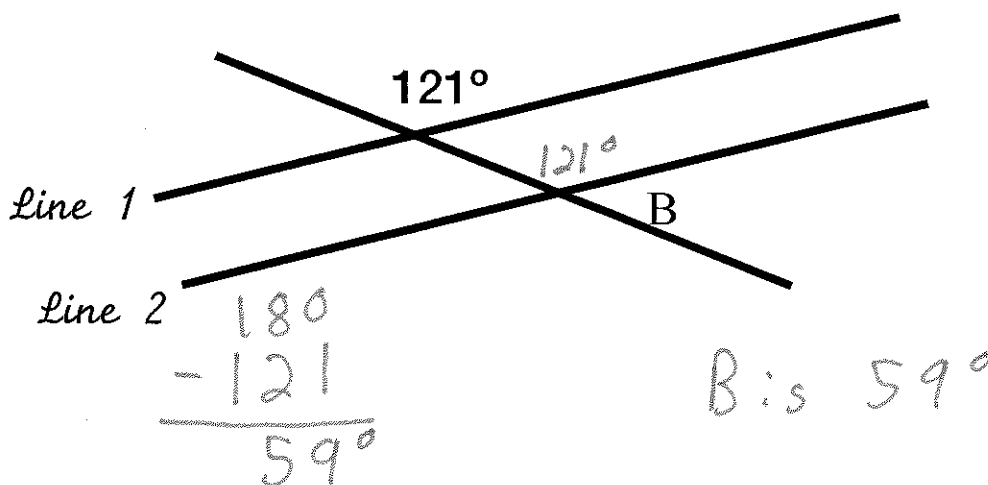
b) What is the measure of an angle which is supplementary to a 40° angle?

140°

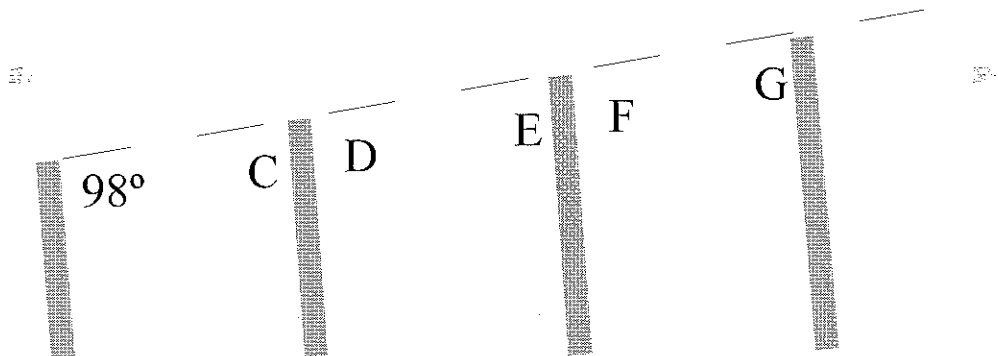
2. Determine the measure of $\angle A$, diagram is NOT to scale



3. Lines 1 and 2 are parallel, Determine the measure of $\angle B$, diagram is NOT to scale

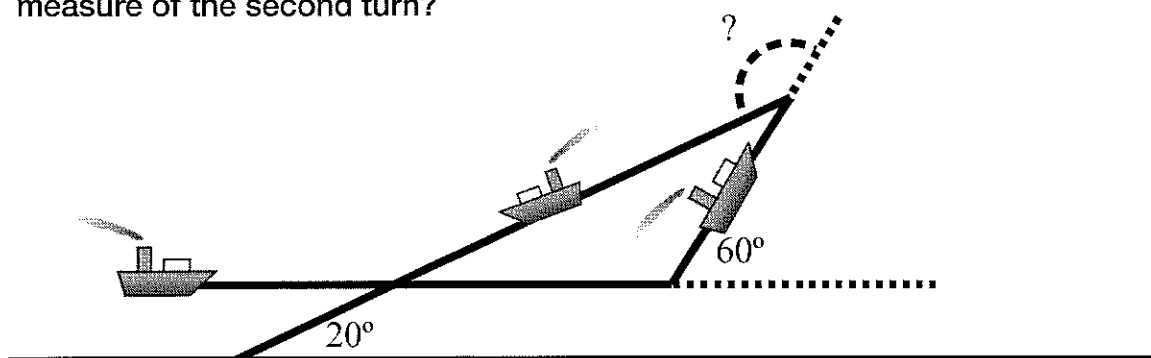


4. A fence is being built down a hill, it is important the fence posts are parallel to one another, what are the measures that angles C, D, E, F and G have to be to ensure the posts are parallel to one another?



$\angle C$	$\angle D$	$\angle E$	$\angle F$	$\angle G$
82	98	82	98	82

5. A ship is traveling parallel to the shore, it makes a 60° turn to the left, and shortly later makes another sharp turn to the left, it is now pointing the the shore at a 20° angle. What was the measure of the second turn?



140°