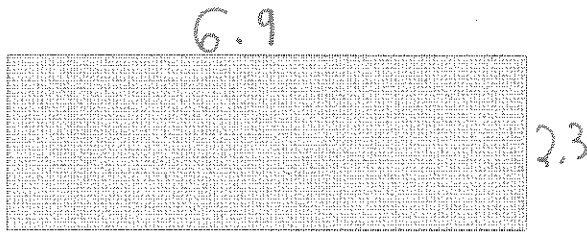
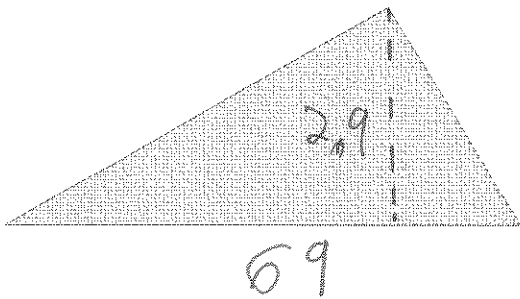


Measure and determine the shaded area in the indicated units



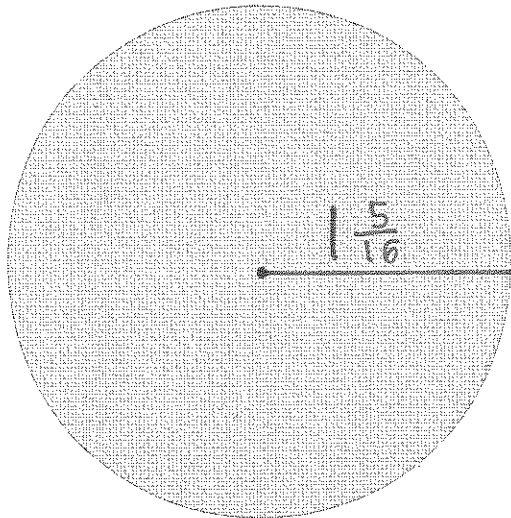
$$6.9 \times 2.3 =$$

$$\underline{15.87} \text{ square centimetres}$$



$$\frac{29 \times 69}{2} =$$

$$\underline{1000.5} \text{ square millimetres}$$



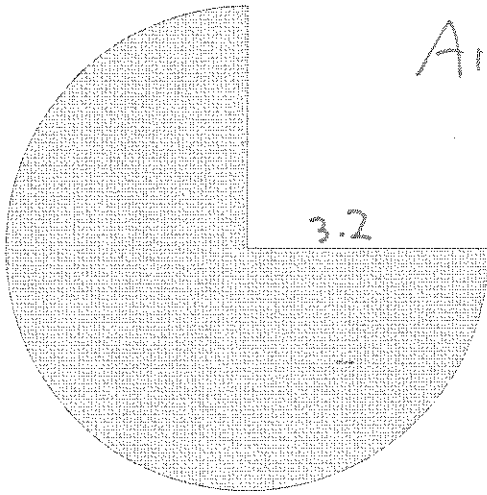
$$1\frac{5}{16} = 1.3125$$

$$A = \pi 1.3125^2$$

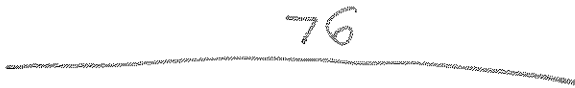
$$\underline{5.41} \text{ square inches}$$

$$A = \pi 3.2^2 = 32.17$$

Area of $\frac{3}{4}$ a circle $32.17 \div 4 \times 3$

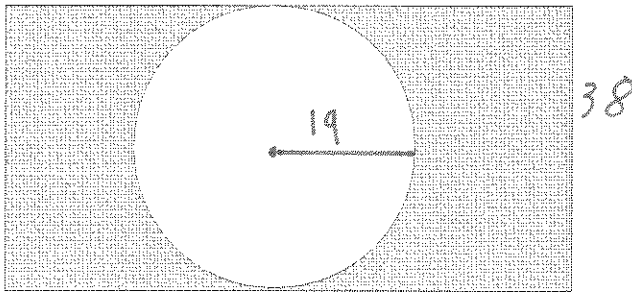


$$\underline{24.13} \text{ square centimetres}$$

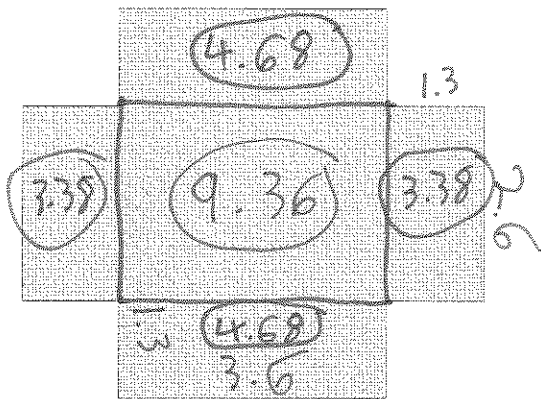


$$76 \times 38 = 2888$$

$$\pi \times 19^2 = \underline{1134.11}$$



$$\underline{1753.89} \text{ square millimetres}$$



$$\underline{25.48} \text{ square centimetres}$$

$$1.3 \times 3.6 = 4.68$$

$$1.3 \times 2.6 = 3.38$$

$$3.6 \times 2.6 = 9.36$$

$$4.68$$

$$+ 4.68$$

$$+ 3.38$$

$$+ 3.38$$

$$+ 9.36$$

$$\underline{25.48}$$